



Stunning to look at and easy to keep

Very high drought tolerance. Very low maintenance.

Appearance

- ✓ Eye-catching dark green colour
- ✓ Soft to the touch and underfoot
- ✓ Fine-medium leaf
- ✓ Early spring green-up
(where dormant in cooler climates)

Features

- ✓ Medium shade tolerance
- ✓ Very low maintenance
- ✓ Less mowing
- ✓ High wear tolerance
- ✓ High salt tolerance
- ✓ Good resistance to insects and diseases
- ✓ Produces low seed head
(common irritant to people with allergies)

Climatic performance

- ✓ Very high drought tolerance
- ✓ Performs in heat and humidity
- ✓ Medium cold tolerance
- ✓ Grows in most parts of Australia

Environmental benefits

- ✓ Low water usage
- ✓ Reduced fertiliser requirements
- ✓ Reduced insecticide, herbicide and fungicide requirements

More information on **EMPIRE™ Zoysia** >



myhometurf.com.au



Stunning to look at
and easy to keep

EMPIRE™ Zoysia is easy growing and adaptable. It's well-suited to Australian conditions, from Darwin to Tasmania, and from Sydney to Perth.

EMPIRE™ performs well in all soil types, including clay and sandy soils. The deep root and underground runner system allows it to endure extreme climates, therefore **EMPIRE™** can handle heat and humidity as well as sub-zero temperatures.

Requiring less mowing, fertiliser and weeding than other grass types, **EMPIRE™ Zoysia** has earned its title as "the low maintenance lawn".

EMPIRE™ is an efficient water user and highly drought tolerant. It's an ideal choice for areas with low rainfall or council water restrictions.

Maintenance

- ✓ Cut to 2cm-5cm in sun, or 5cm-7cm in shade – lower cuts will resemble a Couch lawn, higher cuts will resemble a Fescue lawn with longer leaf blades
- ✓ Mow every 2 weeks in warmer months, and every 3-8 weeks in colder months
- ✓ Fertiliser is recommended twice a year, with an additional application if the lawn is subject to high levels of wear and tear

EMPIRE™ Zoysia is highly drought tolerant **once established** – but, like all plants, needs water. Requirements will vary depending on environmental factors. Be aware of a drying climate and water your lawn accordingly.

Remember, infrequent deep watering of your lawn promotes a healthy lawn and a strong deep-rooted system. Watering time is best in the early morning.



| | |
|---------------------|---|
| Shade tolerance | Medium |
| Drought tolerance | Very high |
| Maintenance | Very low |
| Wear tolerance | High |
| Winter colour | 5/10* |
| Cold tolerance | Medium |
| Best planting time | Avoid laying** 15 th May – 15 th Aug |
| Where it works best | QLD, NSW, VIC, SA, WA, NT |
| Soil type | Most soil types |
| Leaf | Fine-medium |
| Salt tolerance | High |
| Seed head levels | Low |

*Winter colour rating when fertilised.
** We recommend you plant before May 1 in colder climates.
Note: Lawn is a living product that performs differently in various environments and seasonal conditions.



Shade Tolerance
Medium



Drought Tolerance
Very high

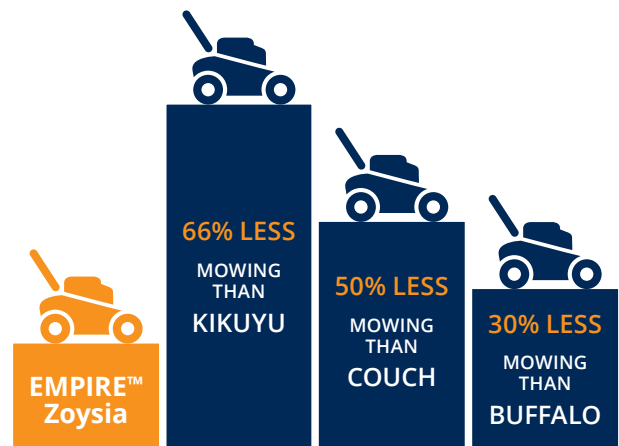


Maintenance
Very low



Wear Tolerance
High

Mowing frequency comparison*...



*Based on observation



myhometurf.com.au