



**EMPIRE**  
**ZOYSIA™**



**Stunning to look at and easy to keep**

*Very high drought tolerance. Very low maintenance.*

### Appearance

- ✓ Eye-catching dark green colour
- ✓ Soft to the touch and underfoot
- ✓ Fine-medium leaf
- ✓ Early spring green-up  
(where dormant in cooler climates)

### Features

- ✓ Medium shade tolerance
- ✓ Very low maintenance
- ✓ Less mowing
- ✓ High wear tolerance
- ✓ High salt tolerance
- ✓ Good resistance to insects and diseases
- ✓ Produces low seed head  
(common irritant to people with allergies)

### Climatic performance

- ✓ Very high drought tolerance
- ✓ Performs in heat and humidity
- ✓ Medium cold tolerance
- ✓ Grows in most parts of Australia

### Environmental benefits

- ✓ Low water usage
- ✓ Reduced fertiliser requirements
- ✓ Reduced insecticide, herbicide and fungicide requirements

**More information on [EMPIRE™ Zoysia](#) >**



[myhometurf.com.au](http://myhometurf.com.au)



**EMPIRE™ Zoysia** is easy growing and adaptable. It's well-suited to Australian conditions, from Darwin to Tasmania, and from Sydney to Perth.

**EMPIRE™** performs well in all soil types, including clay and sandy soils. The deep root and underground runner system allows it to endure extreme climates, therefore **EMPIRE™** can handle heat and humidity as well as sub-zero temperatures.

Requiring less mowing, fertiliser and weeding than other grass types, **EMPIRE™ Zoysia** has earned its title as "the low maintenance lawn".

**EMPIRE™** is an efficient water user and highly drought tolerant. It's an ideal choice for areas with low rainfall or council water restrictions.

### Maintenance

- ✓ Cut to 2cm-5cm in sun, or 5cm-7cm in shade – lower cuts will resemble a Couch lawn, higher cuts will resemble a Fescue lawn with longer leaf blades
- ✓ Mow every 2 weeks in warmer months, and every 3-8 weeks in colder months
- ✓ Fertiliser is recommended twice a year, with an additional application if the lawn is subject to high levels of wear and tear

**EMPIRE™ Zoysia** is highly drought tolerant **once established** – but, like all plants, needs water. Requirements will vary depending on environmental factors. Be aware of a drying climate and water your lawn accordingly.

Remember, infrequent deep watering of your lawn promotes a healthy lawn and a strong deep-rooted system. Watering time is best in the early morning.

Shade tolerance	Medium
Drought tolerance	Very high
Maintenance	Very low
Wear tolerance	High
Winter colour	5/10*
Cold tolerance	Medium
Best planting time	Avoid laying** 15 <sup>th</sup> May – 15 <sup>th</sup> Aug
Where it works best	QLD, NSW, VIC, SA, WA, NT
Soil type	Most soil types
Leaf	Fine-medium
Salt tolerance	High
Seed head levels	Low

\*Winter colour rating when fertilised.  
\*\* We recommend you plant before May 1 in colder climates.  
Note: Lawn is a living product that performs differently in various environments and seasonal conditions.

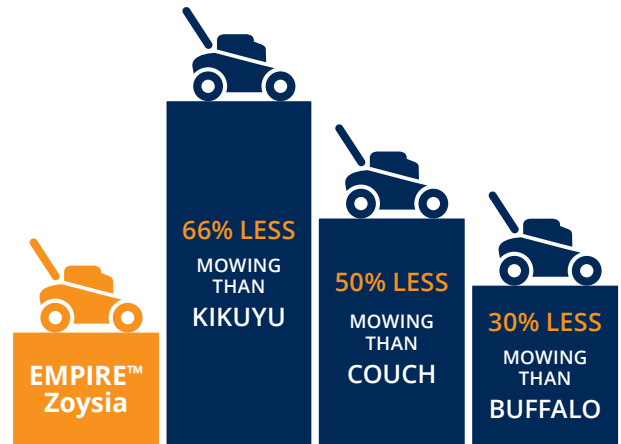
Shade Tolerance  
**Medium**

Drought Tolerance  
**Very high**

Maintenance  
**Very low**

Wear Tolerance  
**High**

### Mowing frequency comparison\*...



\*Based on observation



myhometurf.com.au

